

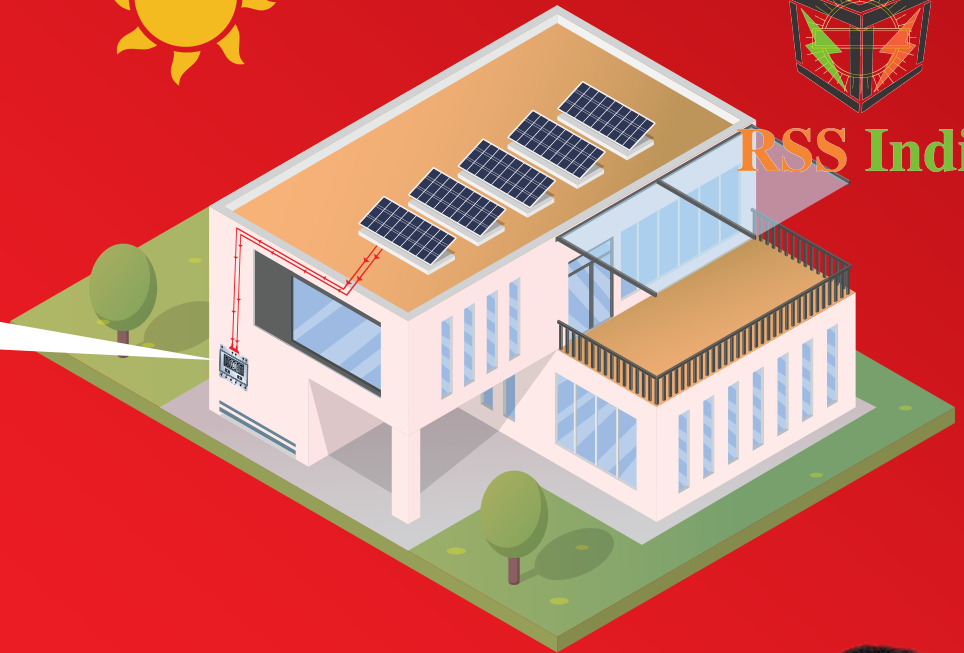
**Livguard**<sup>TM</sup>  
Solar



**SUPER SAVINGS**

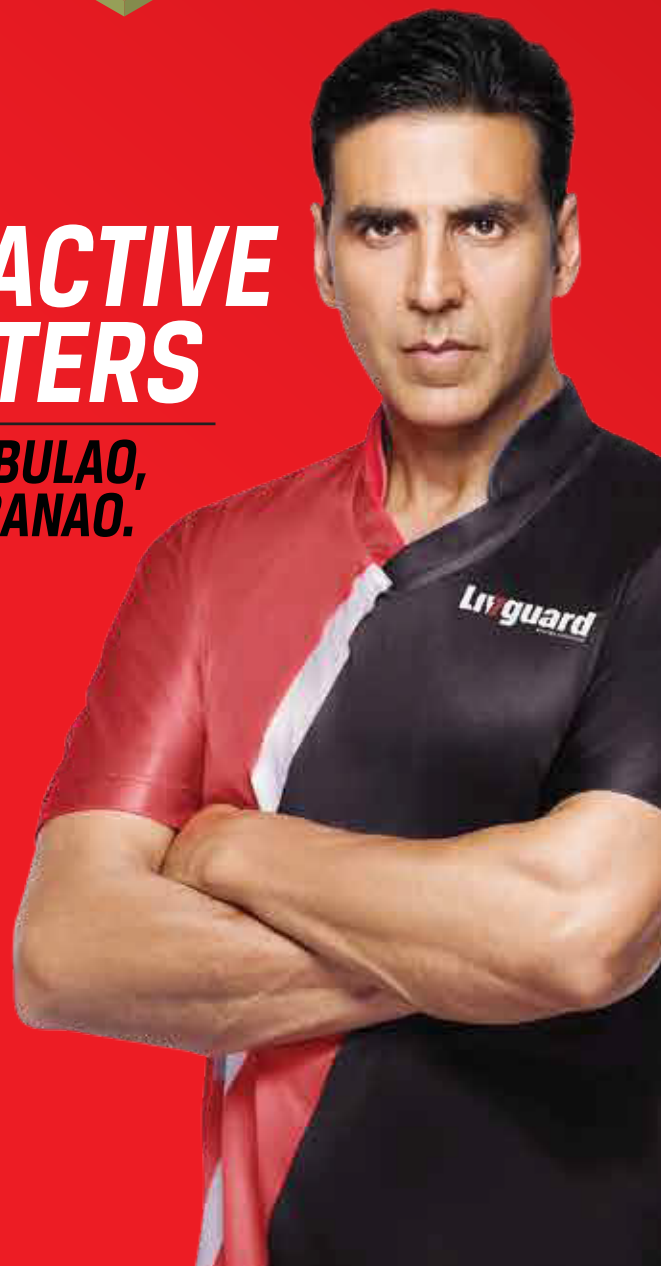


**RSS India**



# **GRID INTERACTIVE INVERTERS**

**EXPERT KO BULAO,  
APNI BIJLI BANAO.**





**RSS India**

## ***ABOUT LIVGUARD***

Livguard Energy Technologies Pvt. Ltd. (LETPL), one of India's leading providers for power energy solutions is poised to transform the world with its cutting edge technology in solar solutions, power back-up, automotive solutions & e-rickshaw batteries. Livguard was founded in the year 2013 and is a part of the SAR Group which has been serving the nation for the past three decades. With our technologically advanced toolkit and trained technicians, we have achieved the customer's trust and faith in our products and services. This has helped us reach the 2,000 crore company milestone in a short period of time.





**RSS India**

# **GRID INTERACTIVE INVERTER (GI)**

## **Product Description**

Livguard Grid Interactive Inverter is a state of the art technology that converts DC power from solar to AC power with the inherent ability to synchronize with the utility grid. Its interface with net metering allows it to sell excess solar power back to the grid.

## **Application**

Homes and establishments that need to reduce their electricity bills.



Wide operating voltage range from 180-276 VAC suitable for Indian grids



8-year warranty to ensure peace of mind and increased ROI



Lowest self-consumption at night (< 1W) leading to greater energy yield



Wide MPPT voltage range and with efficiency > 99.9 % to yield greater solar energy



Best in class intelligent grid interface and management

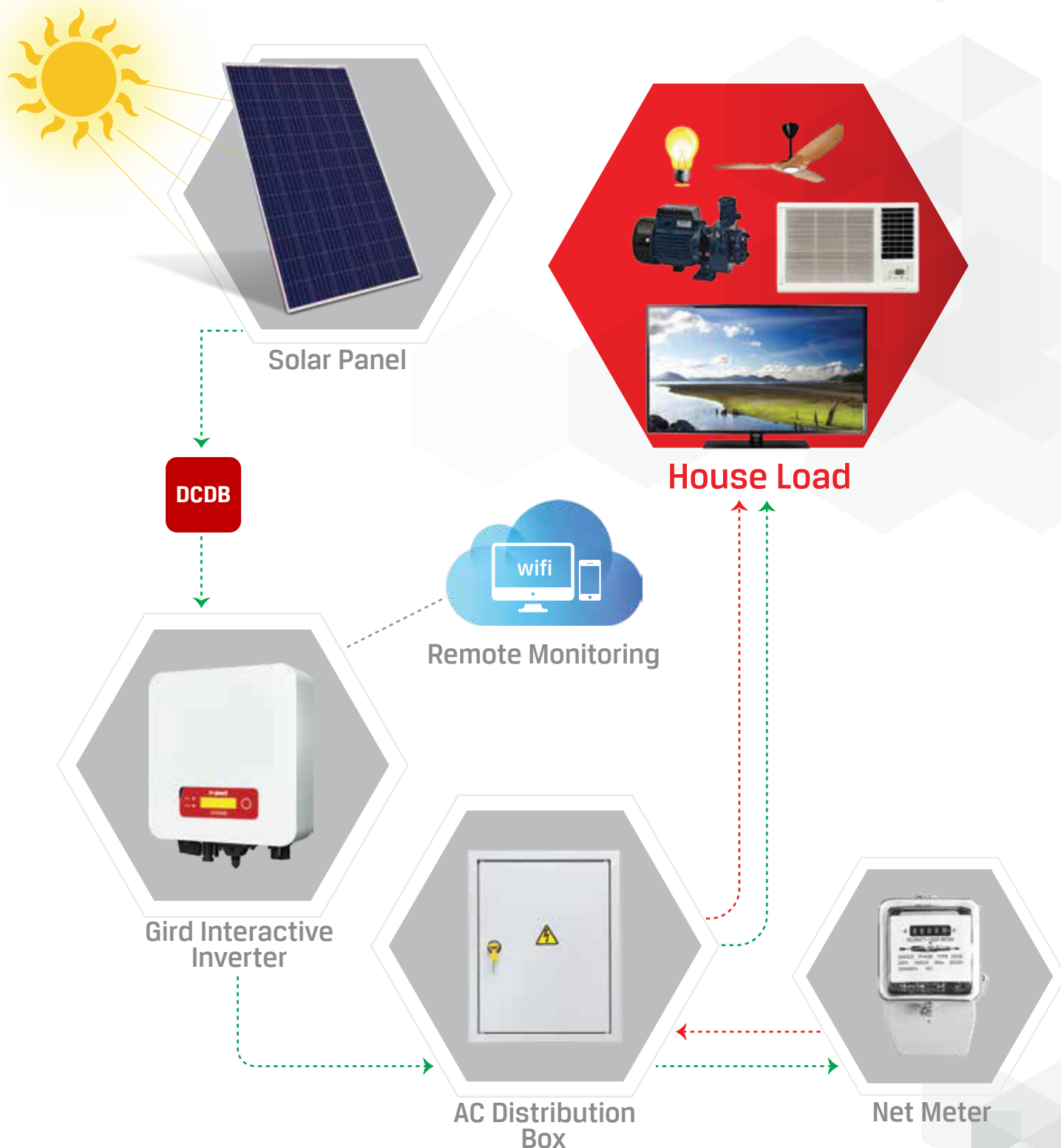
**8** YEAR  
PRODUCT  
WARRANTY





RSS India

# ***GRID INTERACTIVE INVERTER (GI)***







LG Nomenclature	LS1036IS	LS1056IS
Input (DC)		
Recommended Max. PV Input Power	4100Wp	6650Wp
Max. Input Voltage	550V	600V
Number of MPPT/String per MPPT	1/1	2/1
Start-up Input Voltage	70V	120V
Rated Input Voltage	360V	
MPPT Operating Voltage Range	50-550V	90-580V
Full Power MPPT Voltage Range	275-500V	250-520V
Max. Input MPPT current	12Ax1	11Ax2
Max. DC Input Short-circuit Current per MPPT	15Ax1	13.2Ax2
Output(AC)		
Rated Power	3000W	5000W
Max. AC Power	3000VA	5000VA
Max. Output Current	14.5A	22.8A
Nominal Grid Voltage	L/N/PE, 220VAC 230VAC 240VAC	
Grid Voltage Range	180-276VAC	
Nominal Frequency	50/60 Hz	
Grid Frequency Range	45-55Hz/54-66Hz	
THDi	<3%	
Power Factor	1 Default (+/- 0.8 Adjustable)	
Efficiency		
MPPT Efficiency	>99.9%	
Self-consumption at Night	< 1W	
Max. Efficiency	97.7%	98.0%
Protection		
DC Reverse Polarity Protection	Yes	
Safety Protection	Anti-islanding, RCMU, Ground Fault Monitoring	
SPD	MOV: Type III Standard	
Communication		
Standard Communication Mode	WiFi	
General Data		
Topology	Transformerless	
Ambient Temperature Range	-30°C to 60°C	-25°C to 60°C
Permissible Relative Humidity Range	0-100%	
Noise	<25dB	
DC Switch	Optional	
Cooling	Natural Convection	
Max. Operating Altitude	2000m	
Dimension	321x260.5x131.5mm	405x315x135mm
Support bracket	Wall-mounted	
Weight	6.3Kg	11.5Kg
Display	LCD+LED	LCD
Degree of Protection	IP65	
Warranty	8 Years	
Standards Data		
EMC	EN 61000-6-1, EN 61000-6-3, EN 61000-3-2, EN 61000-3-3	EN 61000-6-2, EN 61000-6-3, EN 61000-3-2, EN 61000-3-3, EN 61000-3-11, EN 61000-3-12
Safety standards	IS 16221(Part-2), IS 16169, IEC 62116, IEC 61727, IEC 61683, IEC 60068(1,2,14,30)	IS 16221(Part-2), IS 16169, IEC 62116, IEC 61727, IEC 61683, IEC 60068(1,2,14,30)
Grid standards	EN 50549, UTE_C_15_712-1, VDE V 0126-1-1, UNE 206007-1	VDE V 0126-1-1, V 0124-100, EN 50438, EN 50549, UNE 206007-1 IN

NOTE: Specifications included in this datasheet are subject to change without notice.



**RSS India**

# 3 PHASE GRID INTERACTIVE INVERTER

---

## Product Description

Our range of 3 Phase Inverters is a state of the art technology with all the grid interactive features, including the flexibility for different large scale PV systems and applications

## Application

Homes and establishments that need to reduce their electricity bills

**8 YEAR  
PRODUCT  
WARRANTY**

---



8-year warranty to ensure peace of mind and increased ROI



I-V curve scanning functionality to achieve enhanced safety, proactive maintenance, higher O&M efficiency and lower operation cost



Wide MPPT voltage range and with efficiency > 99.9 % to yield greater solar energy



Highest rated PV input power to ensure maximized utilization of solar energy



Best in class real-time monitoring of solar systems installed, leading to superior customer service



3 Phase Grid Interactive Series					
Parameters	LS305GI	LS308GI	LS310GI	LS320GI	LS330GI
Input (DC)					
Max. Recommended PV Input Power	7320W	11710W	14630W	26600W	39900W
Start-up Input Voltage	180V			250V	
Number of MPPTs	2				
MPPT Voltage Range	160-960V			230-960V	
Input Range with Full Power Operation with 2 MPPTs Parallel	240-850V	380-850V	480-850V	480-850V	520-850V
Max. Input Current	11A/11A			24A/24A	30A/30A
Input Short-circuit Current for each MPPT	14A/14A			30A/30A	37.5A/37.5A
Output (AC)					
Nominal Output Power	5000W	8000W	10000W	20000W	30000W
Max. Output Power	5500VA	8800VA	11000VA	22000VA	33000VA
Max. Output Current	8A	12.8A	15.9A	32A	48A
Grid Input Voltage Range	310-480 VAC (Adjustable)				
Nominal Grid Frequency	50/60Hz				
THD/THDi	〈 3 %				
Efficiency, Safety and Protection					
Max. Efficiency	98.0%	98.3%	98.3%	98.2%	98.4%
Euro Efficiency	97.5%	98.0%	98.0%	98.0%	98.2%
MPPT Adaptation Efficiency	〉 99.5%			〉 99.9%	
Self-consumption at Night	〈 1 W				
Communication	RS 485, WiFi (Optional), GPRS (Optional)				
DC Switch	Yes				
DC Reverse Polarity Protection	Yes				
General Data					
Ambient Temperature	-25°C to +60°C				
Cooling	Natural				Fan
Dimension	457 x 452 x 202 mm			666 x 512 x 254 mm	
Weight	21Kg	22Kg	22Kg	37Kg	37Kg
Noise	〈 29 dB			〈 30 dB	〈 45 dB
Ingress Protection	IP 65				
Warranty	8 Years				
Standards	IS 16221(Part-2), IS 16169, IEC 61727, IEC 60068, IEC 61683, IEC 62109, IEC 61000, IEC 62116				

NOTE: Specifications included in this datasheet are subject to change without notice.



RSS India

# ZERO EXPORT DEVICE

## About Product

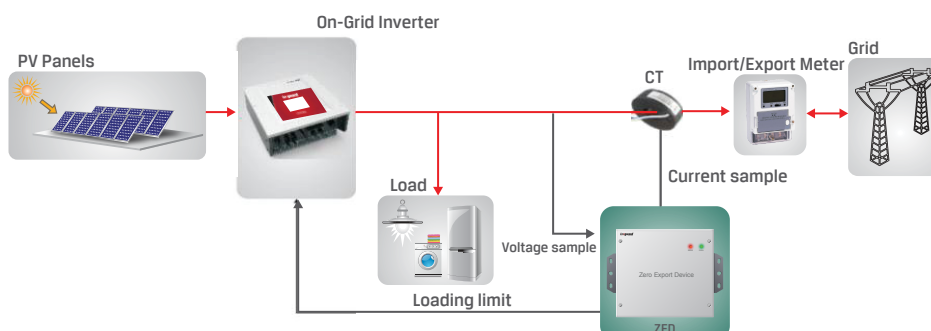
The device helps PV plants to function without net metering.

Also useful for establishments that have DG Sets wherein the solar power is not exported to the DG set.

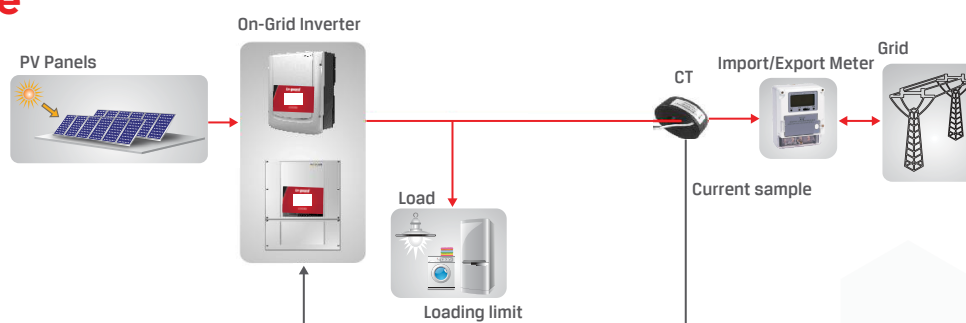
SPECIFICATIONS	
Parameters	Values
Rated Supply Voltage	230 VAC
Power Consumption	< 3 W
Protection Class	IP30
Solar PV kW Compatibility	Up to 1.5 MW
Power Phase Connectivity	Single, Three
L1-N, L2-N, L3-N	90 - 270 Vrms
Input	0 - 1 A
Rated Frequency	50/60 Hz
Frequency Range	45 - 65 Hz
Response Time	1 s
Sampling Rate per Channel (x 10 Channels)	300 per Half Cycle
Switching Elements Max Current/Voltage	2 A/250 VAC, 2 A/220 VDC
Power to Unit	Green LED
Grid Available	Green LED
Generation Available	Red LED
Operation Temperature	-25°C to 60°C
Dimensions (WxHxD)	200 x 180 x 55

NOTE: Specifications included in this datasheet are subject to change without notice.

### 3 Phase



### 1 Phase



### Notes:

[illegible]

Authorised Distributor-



Contact Details:

E- [info@rss-india.com](mailto:info@rss-india.com)  
M- +91 9953698441 / 8800132874  
W- [www.rss-india.com](http://www.rss-india.com)



**RSS India**



**18001025551**

[Livserv@sar-group.com](mailto:Livserv@sar-group.com)

[www.livguard.com](http://www.livguard.com)